

www.gminstrumentation.co.uk

Tel: 01942 674747



HVAC RANGE

Pressure Gauges, Temperature Gauges,
& Associated Accessories

Specifically designed for the UK's heating & ventilation, mechanical services and air conditioning markets.

www.gminstrumentation.co.uk



100mm HVAC Specification Pressure Gauges (Slimline)

100mm Ø gauge with bottom 3/8" BSP connection, black steel case with chromed steel bezel, Class 1.6%

- 1/0 bar and -30"hg/0 dual scale
- 0/1 bar and 0/15 psi dual scale
- 0/2 bar and 0/30 psi dual scale
- 0/4 bar and 0/60 psi dual scale
- 0/7 bar and 0/100 psi dual scale
- 0/11 bar and 0/160 psi dual scale
- 0/14 bar and 0/200 psi dual scale
- 0/20 bar and 0/300 psi dual scale
- 0/28 bar and 0/400 psi dual scale
- 0/40 bar and 0/600 psi dual scale
- 0/70 bar and 0/1000 psi dual scale



100mm HVAC Specification Pressure Gauges (Slimline)

100mm Ø gauge with back 3/8" BSP connection, black steel case with chromed steel bezel, Class 1.6%

- 1/0 bar and -30"hg/0 dual scale
- 0/1 bar and 0/15 psi dual scale
- 0/2 bar and 0/30 psi dual scale
- 0/4 bar and 0/60 psi dual scale
- 0/7 bar and 0/100 psi dual scale
- 0/11 bar and 0/160 psi dual scale
- 0/14 bar and 0/200 psi dual scale
- 0/20 bar and 0/300 psi dual scale
- 0/28 bar and 0/400 psi dual scale
- 0/40 bar and 0/600 psi dual scale
- 0/70 bar and 0/1000 psi dual scale



Altitude Gauges also stocked

Ring Syphons

Heavy duty ring syphons for reducing medium temperature

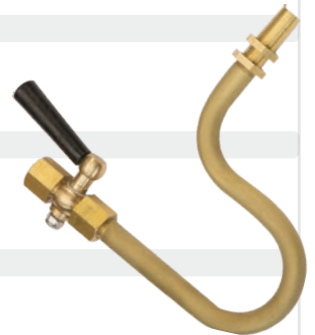
- 1/4" BSP Male to Male Mild Steel
- 3/8" BSP Male to Male Mild Steel
- 1/2" BSP Male to Male Mild Steel
- 1/4" BSP Male to Male Brass
- 3/8" BSP Male to Male Brass
- 1/2" BSP Male to Male Brass
- 1/4" BSP Male to Male 304 St/Steel
- 3/8" BSP Male to Male 304 St/Steel
- 1/2" BSP Male to Male 304 St/Steel
- 1/4" BSP Male to Male 316 St/Steel
- 3/8" BSP Male to Male 316 St/Steel
- 1/2" BSP Male to Male 316 St/Steel



U Syphons

Heavy duty U syphons for reducing medium temperature

- 1/4" BSP Male to Male Mild Steel
- 3/8" BSP Male to Male Mild Steel
- 1/2" BSP Male to Male Mild Steel
- 1/4" BSP Male to Male Brass
- 3/8" BSP Male to Male Brass
- 1/2" BSP Male to Male Brass
- 1/4" BSP Male to Male 304 St/Steel
- 3/8" BSP Male to Male 304 St/Steel
- 1/2" BSP Male to Male 304 St/Steel
- 1/4" BSP Male to Male 316 St/Steel
- 3/8" BSP Male to Male 316 St/Steel
- 1/2" BSP Male to Male 316 St/Steel



Gauge Snubbers

To control the flow or speed of medium pressure into gauge. Externally adjustable

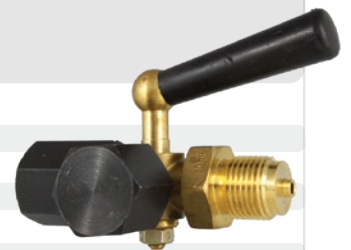
- 1/4" BSP Female to Male Brass
- 3/8" BSP Female to Male Brass
- 1/2" BSP Female to Male Brass
- 1/4" BSP Female to Male 316 St/Steel
- 3/8" BSP Female to Male 316 St/Steel
- 1/2" BSP Female to Male 316 St/Steel
- 1/4" NPT Female to Male Brass
- 3/8" NPT Female to Male Brass
- 1/2" NPT Female to Male Brass
- 1/4" NPT Female to Male 316 St/Steel
- 3/8" NPT Female to Male 316 St/Steel
- 1/2" NPT Female to Male 316 St/Steel



Gauge Cocks

Heavy duty brass gauge cocks for installing pressure gauges

- 1/4" BSP Female to Female
- 3/8" BSP Female to Female
- 1/2" BSP Female to Female
- 1/4" BSP Male to Female
- 3/8" BSP Male to Female
- 1/2" BSP Male to Female



Discounts available for quantity
Stock available for immediate dispatch

HVAC Specification Thermometers

Bottom stem thermometer black steel case with st/steel bezel, Class 1.6% supplied with 1/2" BSP brass pocket

63mm Ø with 50mm Bottom Stem

- 30/+60°C+f dual scale
- 0/+120°C+f dual scale
- 0/+160°C+f dual scale
- 0/+250°C+f dual scale

63mm Ø with 100mm Bottom Stem

- 30/+60°C+f dual scale
- 0/+120°C+f dual scale
- 0/+160°C+f dual scale
- 0/+250°C+f dual scale

100mm Ø with 50mm Bottom Stem

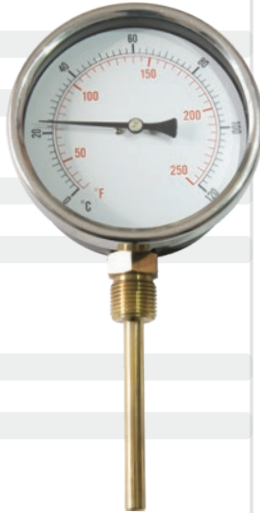
- 30/+60°C+f dual scale
- 0/+120°C+f dual scale
- 0/+160°C+f dual scale
- 0/+250°C+f dual scale

100mm Ø with 100mm Bottom Stem

- 30/+60°C+f dual scale
- 0/+120°C+f dual scale
- 0/+160°C+f dual scale
- 0/+250°C+f dual scale

100mm Ø with 150mm Bottom Stem

- 0/+120°C+f dual scale with 150mm stem



HVAC Specification Thermometers

Back stem thermometer black steel case with st/steel bezel, Class 1.6% supplied with 1/2" BSP brass pocket

63mm Ø with 50mm Back Stem

- 30/+60°C+f dual scale
- 0/+120°C+f dual scale
- 0/+160°C+f dual scale
- 0/+250°C+f dual scale

63mm Ø with 100mm Back Stem

- 30/+60°C+f dual scale
- 0/+120°C+f dual scale
- 0/+160°C+f dual scale
- 0/+250°C+f dual scale

100mm Ø with 50mm Back Stem

- 30/+60°C+f dual scale
- 0/+120°C+f dual scale
- 0/+160°C+f dual scale
- 0/+250°C+f dual scale

100mm Ø with 100mm Back Stem

- 30/+60°C+f dual scale
- 0/+120°C+f dual scale
- 0/+160°C+f dual scale
- 0/+250°C+f dual scale

100mm Ø with 150mm Back Stem

- 0/+120°C+f dual scale with 150mm stem



160mm HVAC Specification Thermometers

Bottom stem thermometer, black steel case and st/st bezel, Class 1.6% supplied with 1/2" BSP brass pocket

Bottom stem thermometer, black steel case and st/st bezel, Class 1.6% supplied with 1/2" BSP brass pocket

160mm Ø with 50mm Bottom Stem

- 30/+60°C+f dual scale
- 0/+120°C+f dual scale

160mm Ø with 100mm Bottom Stem

- 30/+60°C+f dual scale
- 0/+120°C+f dual scale

Back stem thermometer, black steel case and st/st bezel, Class 1.6% supplied with 1/2" BSP brass pocket

160mm Ø with 50mm Back Stem

- 30/+60°C+f dual scale
- 0/+120°C+f dual scale

160mm Ø with 100mm Back Stem

- 30/+60°C+f dual scale
- 0/+120°C+f dual scale



100mm All Stainless Steel HVAC Thermometers

All stainless steel bimetal thermometer. SS304 stainless steel case/bezel/stem, Class 1.6%, supplied without pocket

100mm Ø with 50mm Bottom Stem

- 30/+60°C+f dual scale
- 0/+120°C+f dual scale

100mm Ø with 100mm Bottom Stem

- 30/+60°C+f dual scale
- 0/+120°C+f dual scale

100mm Ø with 50mm Back Stem

- 30/+60°C+f dual scale
- 0/+120°C+f dual scale

100mm Ø with 100mm Back Stem

- 30/+60°C+f dual scale
- 0/+120°C+f dual scale



Add your company logo for no extra charge

Various Brass Pockets

- Brass 1/2" BSP x 50mm Pocket
- Brass 1/2" BSP x 100mm Pocket
- Brass 1/2" BSP x 150mm Pocket
- Brass 1/2" BSP x 155mm Lagging Pocket
- Brass 3/8" BSP x 50mm Pocket
- Brass 3/8" BSP x 100mm Pocket



SS304 Stainless Steel Pockets for HVAC Thermometers

- 1/2" BSP x 50mm Pocket
- 1/2" BSP x 100mm Pocket
- 1/2" BSPT x 50mm Pocket
- 1/2" BSPT x 100mm Pocket



HVAC Specification Pipe Thermometers

63mm Ø st/steel case & bezel with glass window, Class 2.5% with spring suitable for 3/8" to 1 1/2" diameter pipes

- 30/+60°C+f scale
- 0/120°C+f scale
- 0/160°C+f scale
- 0/250°C+f scale
- 0/400°C+f scale



Combined Pressure & Temperature Gauge HVAC Specification

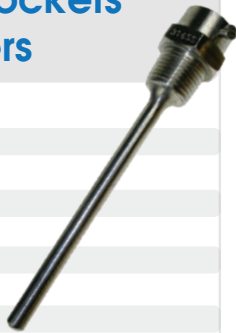
Combined measuring of pressure and temperature, black steel case with chrome plated bezel, complete with 1/2" BSP brass check valve

- 80mm 1/2" back 0/4 bar & 0/120°C
- 80mm 1/2" back 0/6 bar & 0/120°C
- 80mm 1/2" back 0/10 bar & 0/120°C
- 80mm 1/2" bottom 0/4 bar & 0/120°C 7
- 80mm 1/2" bottom 0/6 bar & 0-120°C
- 80mm 1/2" bottom 0/10 bar & 0-120°C



SS316 Stainless Steel Pockets for HVAC Thermometers

- 1/2" BSP x 50mm Pocket
- 1/2" BSP x 100mm Pocket
- 1/2" BSPT x 50mm Pocket
- 1/2" BSPT x 100mm Pocket
- 1/2" NPT x 50mm Pocket
- 1/2" NPT x 100mm Pocket
- 3/8" BSP x 50mm Pocket
- 3/8" BSP x 100mm Pocket



HVAC Specification Magnetic Pipe Thermometers

63mm Ø st/steel case & bezel with glass window, Class 2.5%

- 0/120°C+f scale
- 0/160°C+f scale
- 0/250°C+f scale
- 0/400°C+f scale



Discounts available for quantity
Stock available for immediate dispatch

GM Instrumentation :

115 Railway Road, Leigh, Lancashire WN7 4AJ

Telephone: +44 (0)1942 674 747 Fax: +44 (0)1942 677 272

Email: sales@gminstrumentation.co.uk

www.gminstrumentation.co.uk

